

# COMMERCIAL BUILDING

For Lease



**MARK BOTTLES**  
REAL ESTATE SERVICES



## PROPERTY INFORMATION:

**Address:** 615 N Main St  
Hailey, Idaho 83333

**Location:** Hwy 75 (Main St) N into  
Hailey, past Myrtle St

**Building Size:** +/- 17,100 SF Ground Level  
+/- 13,500 SF Lower Level

**Lot Size:** +/- 0.913 acres

**Remodel/Addition:** 2016

**Lease Rate:** \$ 20.00/SF NNN  
(Basement SF included at  
no charge)

## COMMENTS:

- Former King's store with excellent visibility and curb appeal
- Corner location; two access points
- Shelving and fixtures also available, contact agent



839 S. Bridgeway Place  
Eagle, Idaho

P(208) 377-5700 F(208) 377-0035  
[www.markbottles.com](http://www.markbottles.com)

**Dave Bohecker**

Cell: (208) 230-3309 | Office: (208) 947-1081  
[dbohecker@markbottles.com](mailto:dbohecker@markbottles.com)



# COMMERCIAL BUILDING

For Lease



**MARK BOTTLES**  
REAL ESTATE SERVICES

## **MB** CLOSE AERIAL

615 N MAIN ST, HAILEY, IDAHO



839 S. Bridgeway Place  
Eagle, Idaho

P(208) 377-5700 F(208) 377-0035  
[www.markbottles.com](http://www.markbottles.com)

**Dave Bohecker**

Cell: (208) 230-3309 | Office: (208) 947-1081  
[dbohecker@markbottles.com](mailto:dbohecker@markbottles.com)



# COMMERCIAL BUILDING

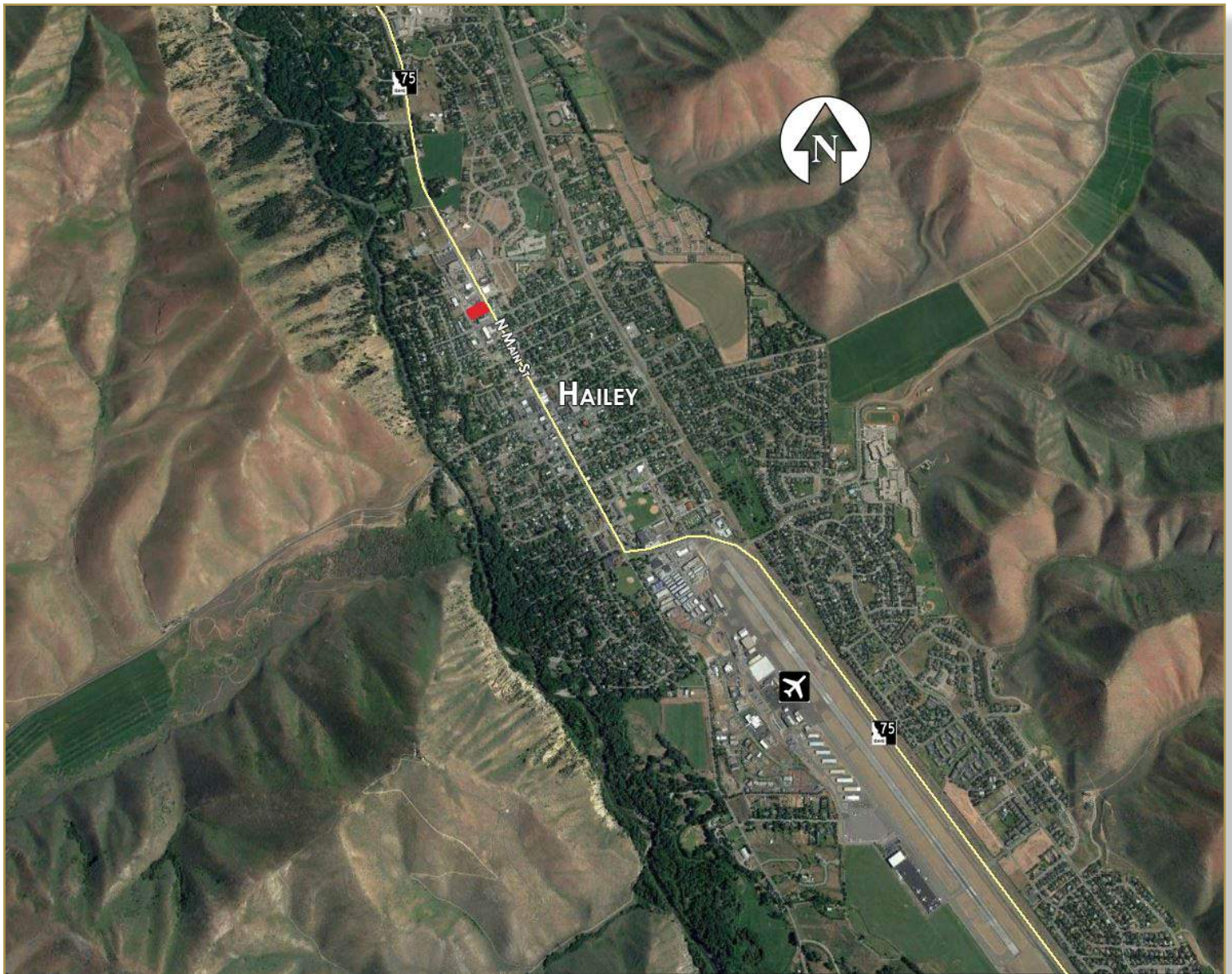
For Lease



**MARK BOTTLES**  
REAL ESTATE SERVICES

## **MB** WIDE AERIAL

615 N MAIN ST, HAILEY, IDAHO



839 S. Bridgeway Place  
Eagle, Idaho

P(208) 377-5700 F(208) 377-0035

[www.markbottles.com](http://www.markbottles.com)

**Dave Bohecker**

Cell: (208) 230-3309 | Office: (208) 947-1081

[dbohecker@markbottles.com](mailto:dbohecker@markbottles.com)