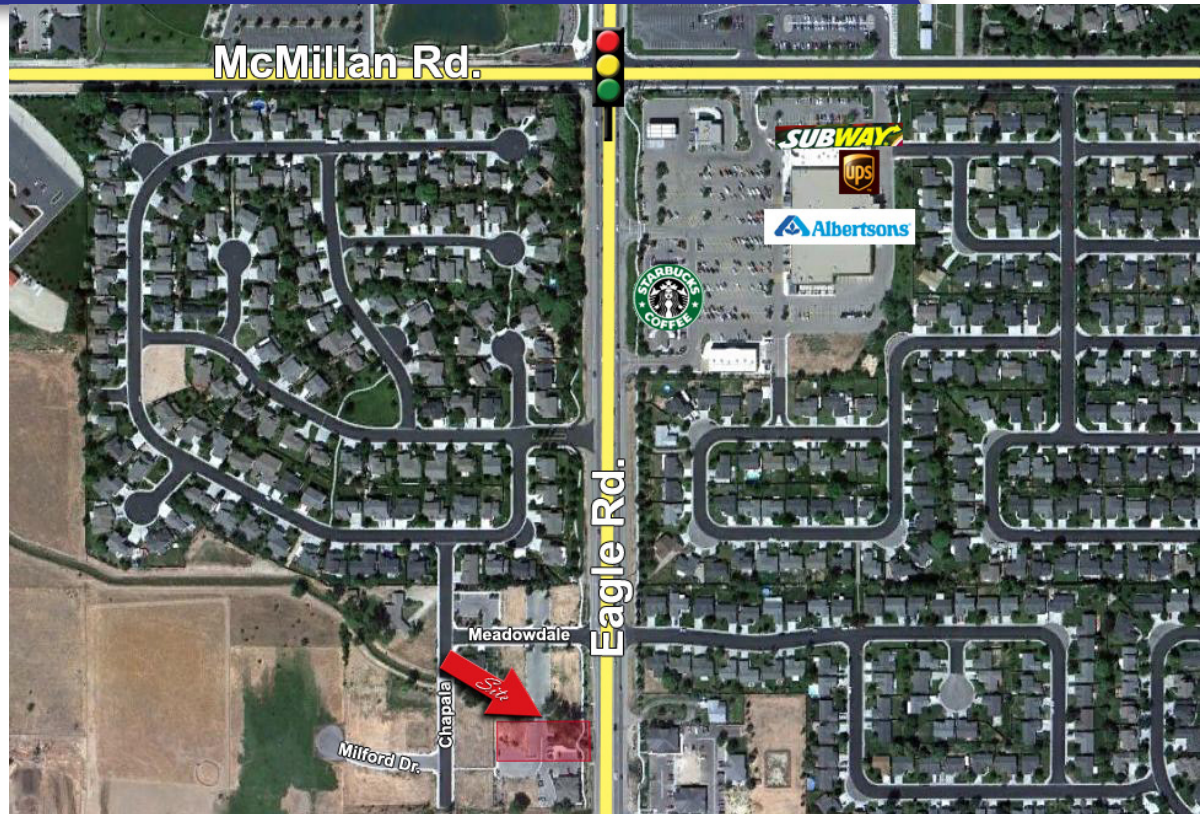


MILFORD CREEK OFFICE LOT

For Sale



MARK BOTTLES
REAL ESTATE SERVICES



PROPERTY INFORMATION:

Address: 13827 W Meadowdale St
Boise, Idaho 83713

Directions: N on Eagle Rd
W on Meadowdale

Acres: +/- 0.57

Zoning: N-OD
Office use with design review

Price: \$159,900

COMMENTS:

- High traffic counts

- +/- 0.57 acres available between McMillan and Ustick
- Property fronts Eagle building envelope set back
- Building envelope to be determined



839 S. Bridgeway Place
Eagle, Idaho
P(208) 377-5700 F(208) 377-0035
www.markbottles.com

Sean Moorhouse
Cell: (208) 870-7100
smoorhouse@markbottles.com