

DOWNTOWN MERIDIAN OFFICE BUILDING For Lease



MARK BOTTLES
REAL ESTATE SERVICES



PROPERTY INFORMATION:

Address: 323 W Pine Ave
Meridian, ID 83642

Location: W of Meridian Rd on Pine in
Downtown Meridian

Building Size: +/- 1,606 SF

Acres: +/- 0.18

Zoning: Commercial

Lease Rate: \$10.00/SF NNN

COMMENTS:

- Ideal for medical/office users or possible daycare or retail location
- Excellent exposure and access with +/- 120 ft frontage on Pine Ave
- Tenant improvements negotiable
- +/- 500 SF storage in basement included
- Close to downtown, schools and city hall
- Approximately 15 parking spaces available

839 S. Bridgeway Place
Eagle, Idaho
P(208) 377-5700 F(208) 377-0035
www.markbottles.com

Ben Fulcher

Cell: (208) 859-7407 Office: (208) 947-1073
bfulcher@markbottles.com

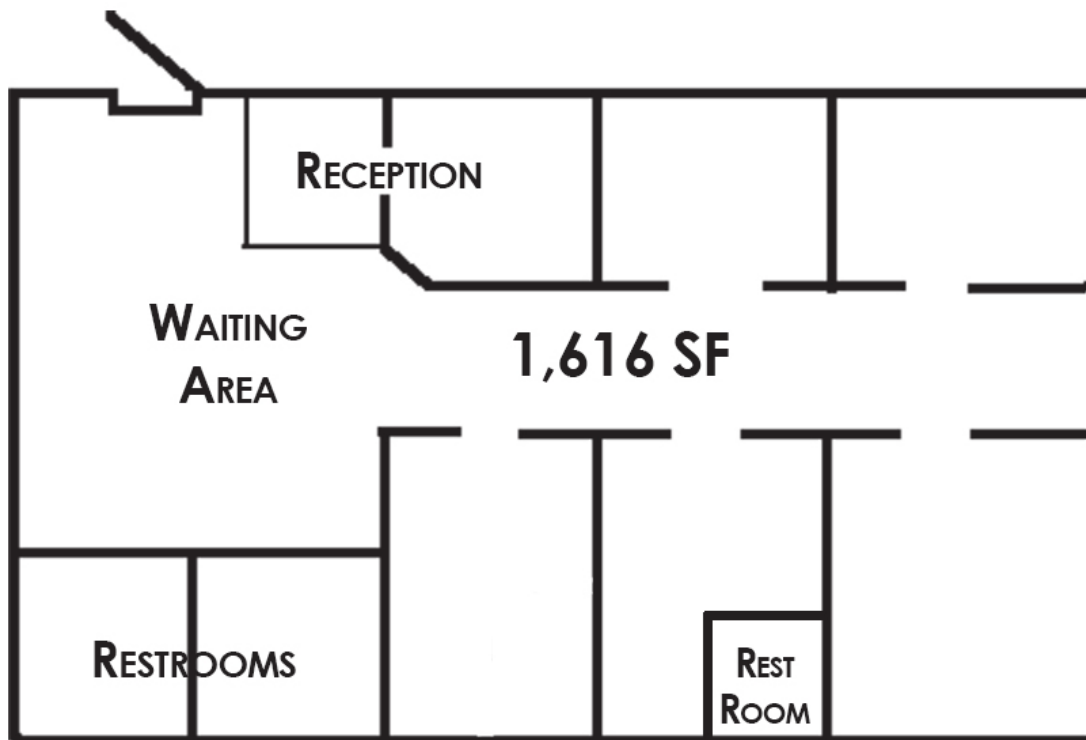
DOWNTOWN MERIDIAN OFFICE BUILDING For Lease



MARK BOTTLES
REAL ESTATE SERVICES

MB FLOOR PLAN

323 W PINE AVE, MERIDIAN



(NOT TO SCALE)

839 S. Bridgeway Place
Eagle, Idaho
P(208) 377-5700 F(208) 377-0035
www.markbottles.com

Ben Fulcher

Cell: (208) 859-7407 Office: (208) 947-1073
bfulcher@markbottles.com

DOWNTOWN MERIDIAN OFFICE BUILDING For Lease



MARK BOTTLES
REAL ESTATE SERVICES

MB PHOTOS

323 W PINE AVE, MERIDIAN



839 S. Bridgeway Place
Eagle, Idaho
P(208) 377-5700 F(208) 377-0035
www.markbottles.com

Ben Fulcher
Cell: (208) 859-7407 Office: (208) 947-1073
bfulcher@markbottles.com

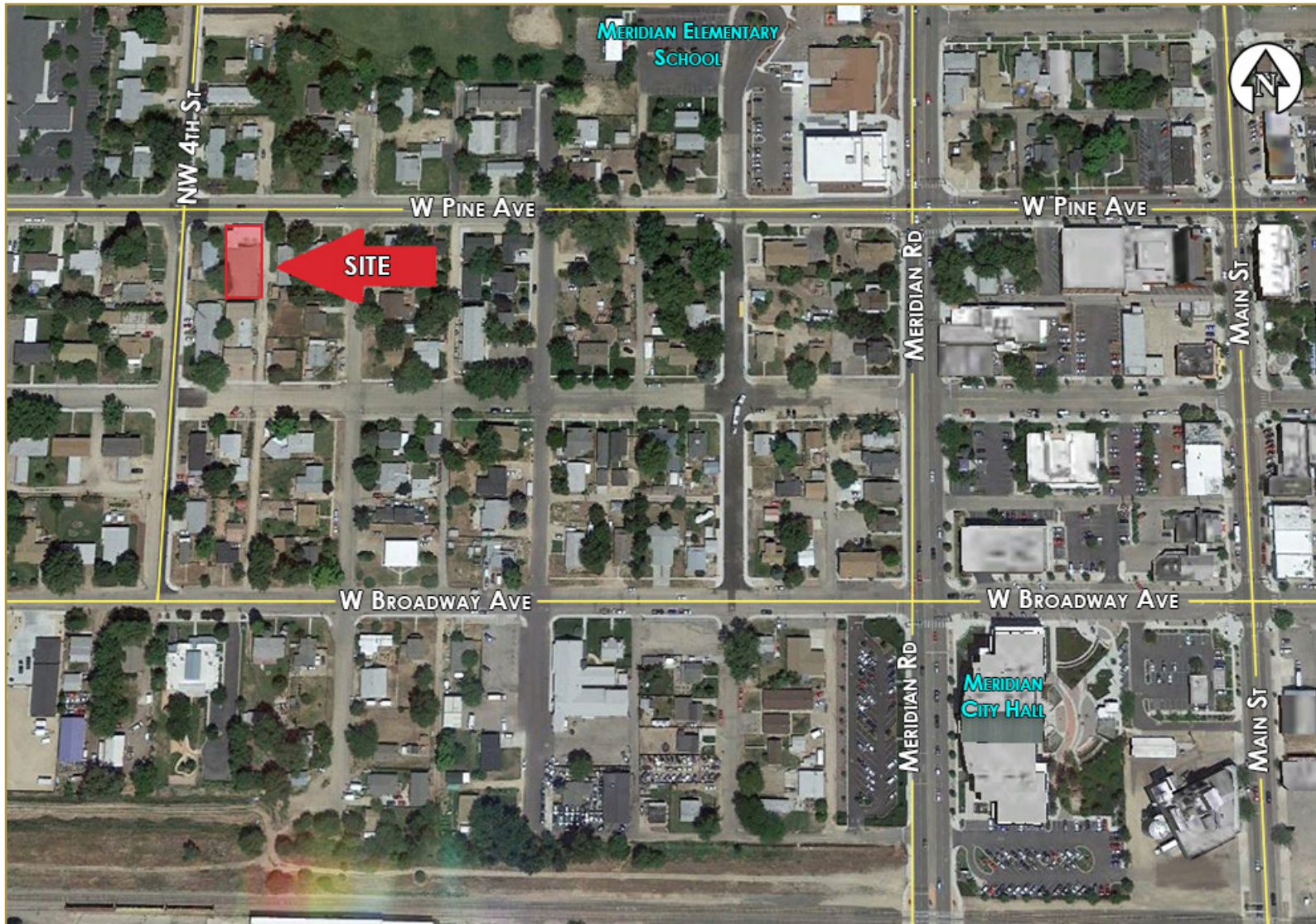
DOWNTOWN MERIDIAN OFFICE BUILDING For Lease



MARK BOTTLES
REAL ESTATE SERVICES

MB AERIAL

323 W PINE AVE, MERIDIAN



839 S. Bridgeway Place
Eagle, Idaho

P(208) 377-5700 F(208) 377-0035

www.markbottles.com

Ben Fulcher

Cell: (208) 859-7407 Office: (208) 947-1073

bfulcher@markbottles.com