

Residential Land - Pine, ID

For Sale



MARK BOTTLES
REAL ESTATE SERVICES



PROPERTY INFORMATION:

Address: TBD Pine-Featherville Rd
Pine, Idaho 83647

Directions: I-84 exit #95 Hwy 20 North, N on Pine-Featherville Rd through Pine, continue N on Pine-Featherville Rd just past Hidden Pine Sub

Acres: +/- 17.5

Zoning: AG - General Agriculture

Price: \$79,000

COMMENTS:

- Gorgeous river front property
- Great hunting & fishing location
- Large parcel adjacent to Hidden Pine Sub
- No legal access - could apply for Forest Service permit for access

839 S. Bridgeway Place
Eagle, Idaho
P(208) 377-5700 F(208) 377-0035
www.markbottles.com

Norm Brown

Cell: (208) 866-2450 | Office: (208) 947-1086
nbrown@markbottles.com

Residential Land - Pine, ID

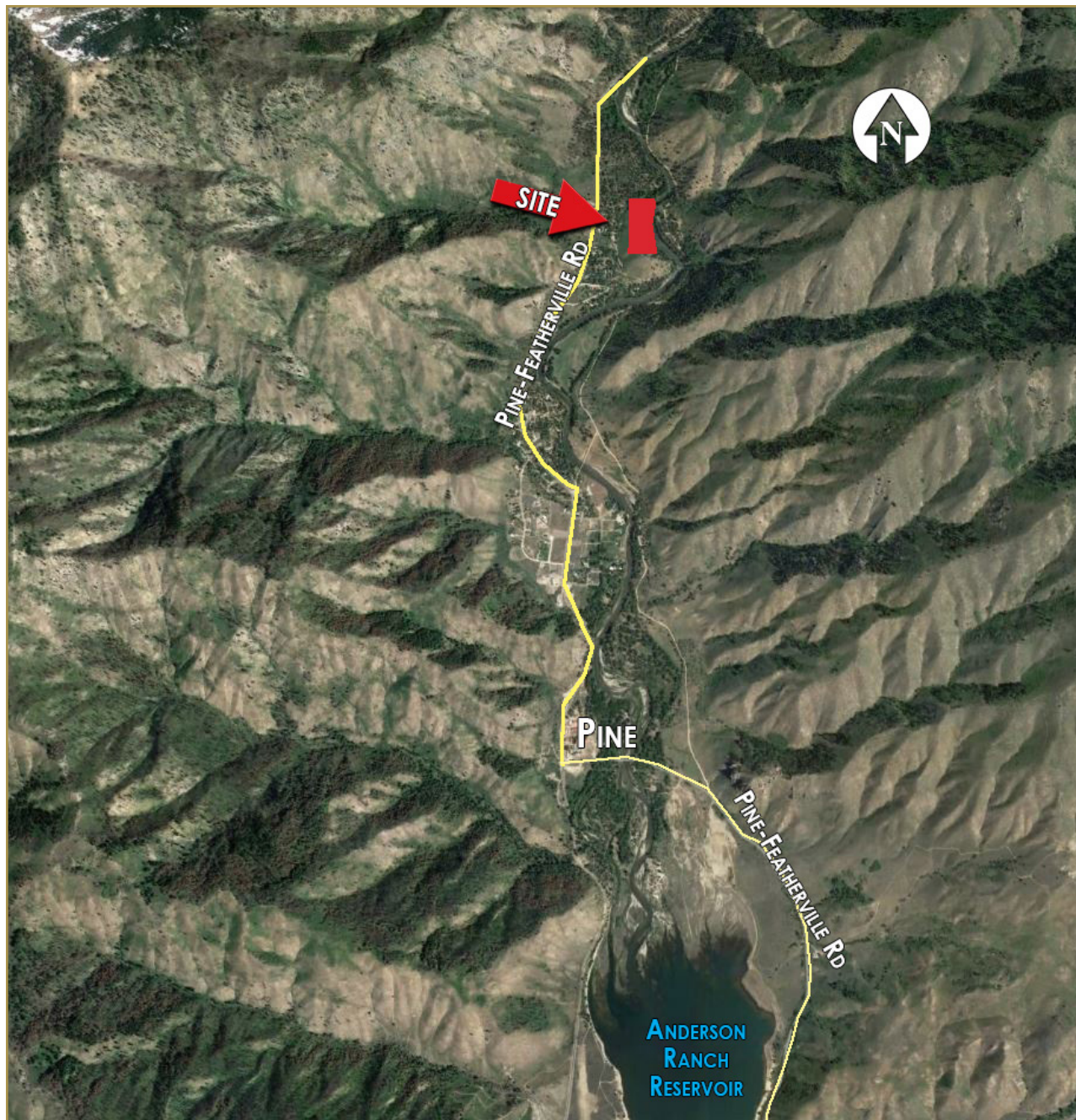
For Sale



MARK BOTTLES
REAL ESTATE SERVICES

MB WIDE AERIAL

TBD PINE-FEATHERVILLE RD, PINE, ID



839 S. Bridgeway Place
Eagle, Idaho

P(208) 377-5700 F(208) 377-0035
www.markbottles.com

Norm Brown

Cell: (208) 866-2450 | Office: (208) 947-1086
nbrown@markbottles.com