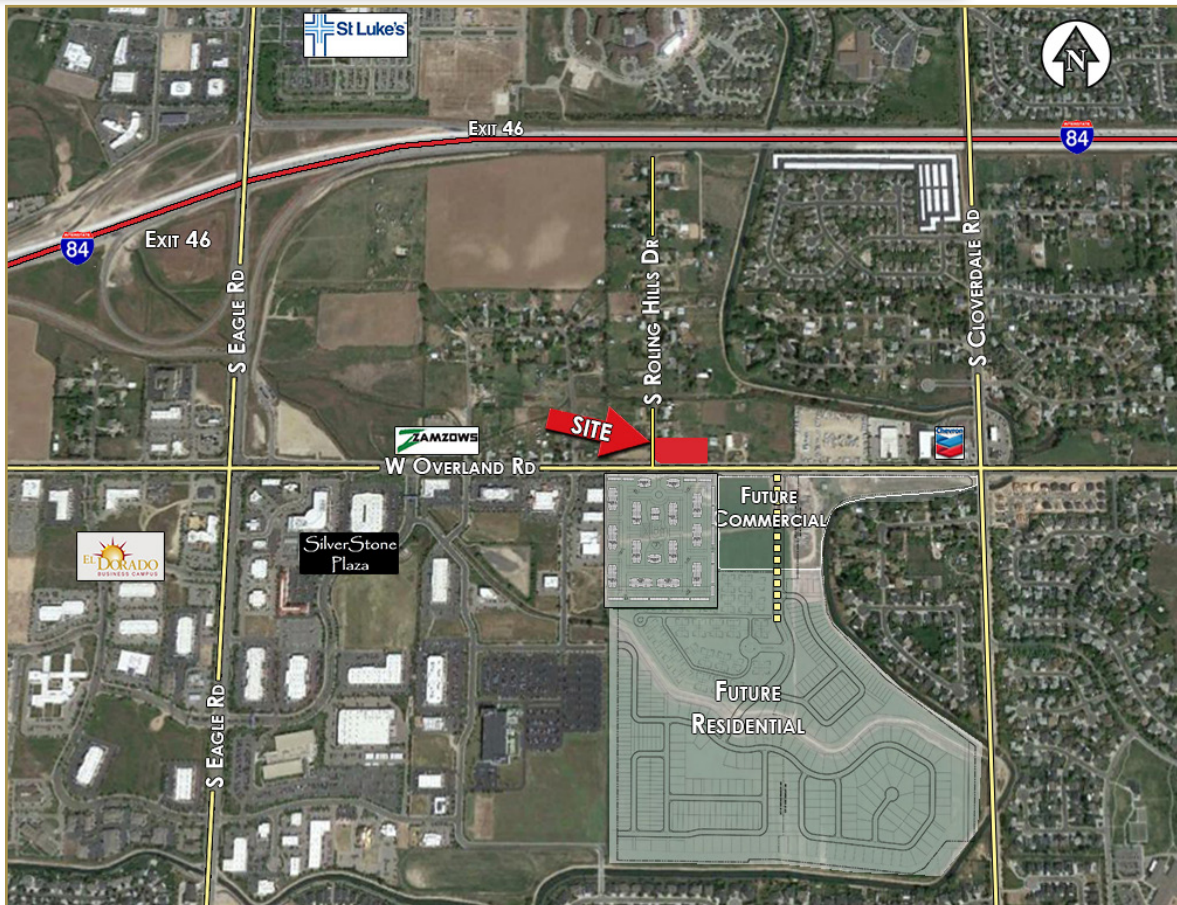


PRIME OFFICE/COMMERCIAL

Land For Sale



MARK BOTTLES
REAL ESTATE SERVICES



PROPERTY INFORMATION:

Address: 1560 S Rolling Hills Dr
Meridian, ID 83642

Location: Overland Rd between Eagle Rd and Cloverdale Rd

Acres: +/- 1.16

Zoning: R-1

Price: \$278,000

COMMENTS:

- Excellent freeway access at Eagle Rd
- +/- 300 ft of Overland Road frontage
- Close to Silverstone Corporate Business Park
- Large multi-family apartments to be built across Overland Rd
- Potential commercial use, currently neighborhood office use
- Traffic Counts: E of Eagle Rd 26,198 VPD
W of Cloverdale 24,228 VPD

839 S. Bridgeway Place
Eagle, Idaho
P(208) 377-5700 F(208) 377-0035
www.markbottles.com

John Bottles

Cell: (208) 994-2255 | Office: (208) 947-1118
jbottles@markbottles.com

PRIME OFFICE/COMMERCIAL

Land For Sale



MARK BOTTLES
REAL ESTATE SERVICES

MB CLOSE UP AERIAL

1560 S ROLLING HILLS DR, MERIDIAN



839 S. Bridgeway Place
Eagle, Idaho
P(208) 377-5700 F(208) 377-0035
www.markbottles.com

John Bottles

Cell: (208) 994-2255 | Office: (208) 947-1118
jbottles@markbottles.com